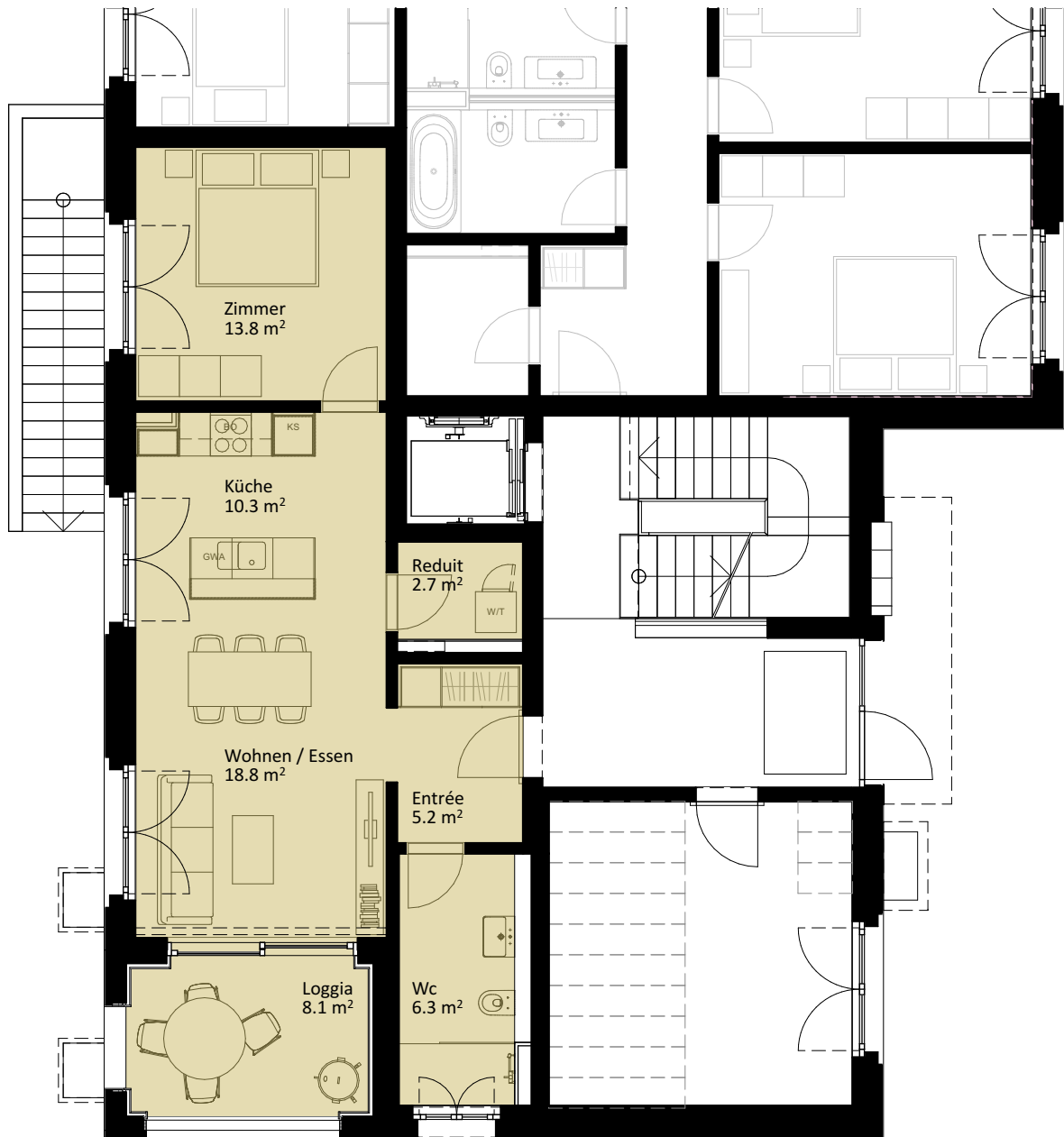
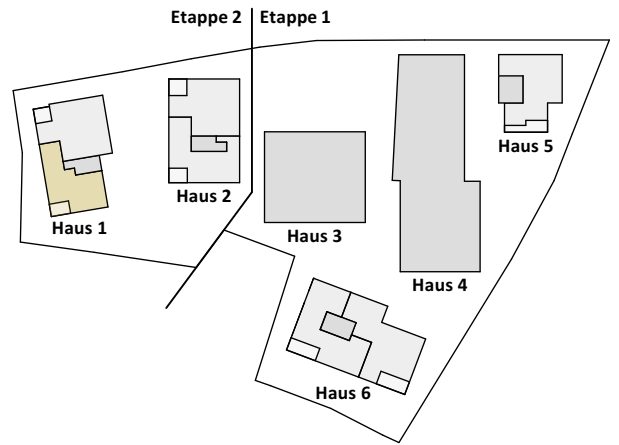


# Wohnungsgrundrisse Haus 1



## Haus 1

|                 |                     |
|-----------------|---------------------|
| Wohnung         | 1.0.2               |
| Etage           | EG                  |
| Zimmer          | 2½                  |
| Wohnfläche      | 57.1 m <sup>2</sup> |
| Loggia          | 8.1 m <sup>2</sup>  |
| Keller          | 8.0 m <sup>2</sup>  |
| Kaufpreis netto | 345'000 CHF         |

